

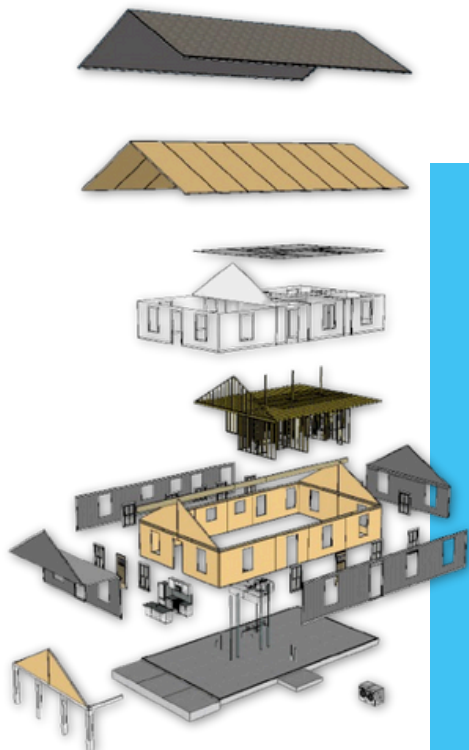


SOLVING FOR THE FUTURE OF AFFORDABLE HOUSING

Applying the Design for Manufacturing and Assembly (DFMA) approach, Navigate Affordable Housing Partners is working to re-image the delivery of affordable housing with Fortis.

The idea is to deploy energy-efficient homes rapidly, and affordably using existing construction best practices and streamlined components.

The goal is a turnkey housing solution, from bill-of-materials through to construction, within a 45-day on-site assembly window.



Fortis is more than a home—it's a commitment to sustainability, efficiency, and a brighter future for affordable housing.

THE HOUSING CHALLENGE

The affordable housing shortage is alarming, with an estimated seven million units needed in the U.S. alone. Traditional construction methods are plagued by:

- Extensive build times (4-6 months)
- Excessive costs
- Limited Labor pool
- Over-reliance on 18+ different trades
- Varied degrees of quality
- Material waste
- Inefficiencies in design and delivery
- Security issues, theft, and vandalism

THE SOLUTION

Fortis streamlines home construction by using off-site manufacturing and design-to-construct methods.

- Home prototypes are standardized for maximum efficiency.
- Bulk-order of quality & energy-efficient materials for each home.
- Offers a detailed Bill-of-Materials.
- Pre-assemble components like the interior walls, cabinetry & hardware, doors & hardware off-site at our Marc Steel campus.
- Delivery of a kit of parts that means on-site assembly of homes efficiently, rapidly, and systematically.



THE BENEFITS

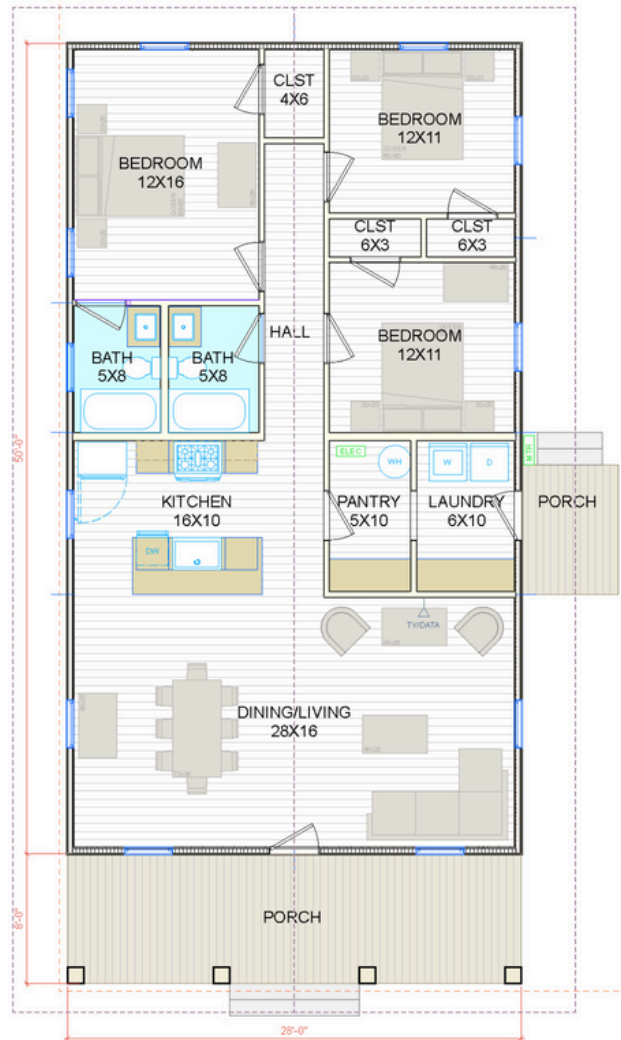
- ✓ 100% of home is pre-ordered and pre-packaged.
- ✓ Once infrastructure and foundations are in place, a family can move in within 45 days.
- ✓ It's not a tiny home or a shipping container.
- ✓ It is high-performance in terms of the efficiency, comfort, indoor environment, quality, safety, and durability.

OUR TEAM OF EXPERTS

Fortis is the work of a team of thought-leaders in community development, design, building, and construction.

- **Navigate Communities:** Leaders in the Affordable Housing industry working to ensure and expand access to affordable housing.
- **Design Initiative:** Award-winning Architectural Design & Delivery firm.
- **Extreme Panel Technologies:** Experts in off-site Structural Insulated Panel production, assembly, logistics, and on-site execution

1400 ft² conditioned space + porch



For program details and additional information, contact Archie Hill.

205.445.2760

fortis@navigatecommunities.com